



SMap for



User Guide

Sanoodi

Share your adventure





Sanoodi Mobile User Guide

SMap Windows Mobile - V1.1

Contents

1. What is SMap?	3
2. Getting started & installation	4
3. Setting up your account and SMap	5
4. Recording and managing routes	7
5. FAQ's	9
6. Appendix	11
1. File locations	11
2. GPRS settings	12
1. US & Canada	12
2. UK.....	13
3. Europe	13
4. Asia, Australasia and Middle East	19
5. Americas and Africa	23
3. SMap license	25

Windows, Windows Mobile and the Windows Mobile Logo are registered Trademarks of Microsoft Corporation. Sanoodi, SMap and the SMap and Sanoodi logos are registered Trademarks of Sanoodi Ltd.



SMap User Guide

Windows Mobile version 1.1

The information contained in this guide is subject to change please check <http://www.sanoodi.com/gomobile/> for latest versions of SMap and supporting documentation

1. What is SMap?

If you are a keen runner, enjoy hiking in the hills or simply can't wait to get onto your bike! SMap is a free route recording application for your Windows Mobile. SMap utilises the Global Positioning System (GPS) in your device to record your routes and associate media and other information with the route. SMap will work anywhere on the planet that has a clear view of the sky!

SMap allows you to manage your routes and easily upload them onto the Sanoodi website live or later when you connect your Windows Mobile to your desktop computer. SMap is the heart of Sanoodi. SMap is available for Windows Mobile 6, Nokia S60 and other platforms. Keep a look out for new releases and share those adventures!

Please read this before you start - SMap for Windows Mobile

SMap for Windows Mobile® can ONLY be installed onto Windows Mobile® devices that run either Windows Mobile® version 6 or 5. If you are not sure you can find out what version of Windows your device is running tap Start > Settings > System (Tab) > About. The About screen that you see may look slightly different depending on the version you're running, but the Version line of data is most important (please note that Windows mobile phones may have slightly different version numbers):

Windows Mobile 5 - Version no's: 5.1.xxx

Windows Mobile 6 - Version no's: 5.2.xxx

Sanoodi has developed SMap based on Windows Mobile 6 if you are installing SMap onto a Windows Mobile 5 device please ensure that your device has all necessary items as detailed in the next section of this manual.

Before installing new applications onto your Windows Mobile® always check the OS requirements of the application and the OS that your device is running!

SMap can ONLY operate as described with an external Bluetooth GPS receiver or if the mobile device is equipped with an internal GPS. The following Windows Mobile® devices have an internal GPS:



fig. i: About screen

Windows Mobile 6 or higher:	Windows Mobile 5
<ul style="list-style-type: none"> ● Asus P320 ● HTC / Eten TyTN II ● HTC / Eten Touchcruise ● HTC / Eten Glofiish X600 & X800 ● HTC / Eten Touch ● i-mate Ultimate 8502 & 9502 ● Mio A701 ● Motorola MC35 ● MWg Atom V ● T-Mobile MDA Vario III ● XDA Orbit 2 	<ul style="list-style-type: none"> ● iPAQ RW6815 ● iPAQ 6915 ● iPAQ 614c ● Mio Digiwalker ● Mio P550 ● T-Mobile MDA Compact III



2. Getting started

This section details how to install SMap onto your Windows Mobile device and what software might be required on your desktop computer in order to install the SMap application easily.

2.1 Installing SMap

You can install SMap either via your PC or via your Mobile's Device's browser.

2.2 Installing from your PC

To learn more and download the SMap installation files, manual and license please open your Internet Browser and go to

<http://www.sanoodi.com/gomobile/windows-mobile/>

To just download SMap go to <http://www.sanoodi.com/gomobile/windows-mobile/>

To install SMap onto your mobile device via your PC you may need to install Windows Active Sync onto your PC if your desktop PC has Windows 2000 or XP if your desktop does not already have this, it can be downloaded from here:

<http://www.microsoft.com/downloads/details.aspx?FamilyID=9e641c34-6f7f-404d-a04b-dc09f8141141&DisplayLang=en>

If your Desktop PC is running Windows Vista you will need to ensure that Windows Mobile Device center is installed. Please check which version your Desktop requires

<http://www.microsoft.com/downloads/details.aspx?FamilyID=46f72df1-e46a-4a5f-a791-09f07aaa1914&DisplayLang=en>

To run SMap on Windows Mobile 5 (all editions), you may also need to install the .NET Compact Framework runtime and the SQL Server Compact Edition runtime:

1 .NET Compact Framework V2.0 SP2:

<http://www.microsoft.com/downloads/details.aspx?FamilyID=aea55f2f-07b5-4a8c-8a44-b4e1b196d5c0&DisplayLang=en>

2 SQL Server 2005 Compact Edition:

<http://www.microsoft.com/downloads/details.aspx?FamilyID=85e0c3ce-3fa1-453a-8ce9-af6ca20946c3&DisplayLang=en>

Note that both these downloads install onto a desktop PC, and you need to have the target device connected by USB or Bluetooth to that PC using ActiveSync (Windows 2000/XP) or Windows Mobile Device Center (Vista) in order to install SMap onto the device.

2.4 Via your Windows Mobile Browser

If you have internet access on your phone you can install SMap directly from your Windows Mobile browser.

Open the Browser on your phone and go to

<http://wap.sanoodi.com/>

Select the link for you platform i.e. Windows Mobile! and click.

This will automatically install the SMap application onto your phone. Please note that your phone will need to have data connectivity set up. This should not take more than a couple of minutes at normal GPRS data rates, on 3G or Edge networks this will be even quicker.

Please go to the FAQ's section at the back of this guide if you are having any problems.



3 - Setting up your account

Once that you have installed SMap onto your Windows Mobile, you will need to set up a user on SMap. This is so that you can upload your routes from SMap onto the Sanoodi Web-site, it also means that SMap can be used on your Windows Mobile by other users.

3.1 Setting up a user on SMap

When you start SMap for the first time it will prompt you to create a user. If you already have a user account on the Sanoodi website, just create an account on SMap using your existing Sanoodi website username and password.

If you don't have an account but you do have access to the internet just go to <http://www.sanoodi.com/register> and create your account. Once that you have done this. create an account using the same username, e-mail address and password on SMap.



fig i: Set up a new user



fig ii: Entering your username, e-mail address and password

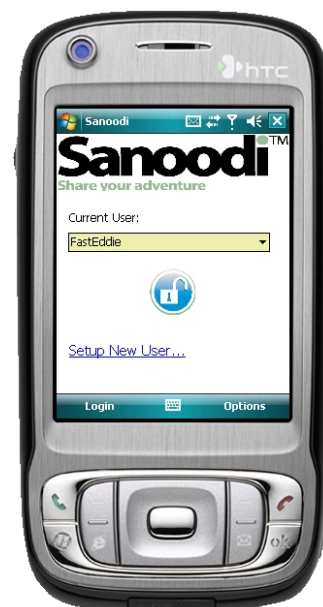


fig iii: Login and setup an additional (new) user account screen.

Alternatively, if you don't have access to the web and just want to get going! You can create an account on SMap and just go! You will though have to create an account on the Sanoodi website if you want to upload and share your routes on Sanoodi. PLEASE REMEMBER that if you choose a user name like Johnwilliams or herrschmidt this userid might already be taken. So, if you are creating a new Sanoodi account offline and do not have access to the web, please try to select a unique user name.

S *SMap can be used on your Windows Mobile by more than one user. To create additional users go to login screen and select create account from login menu.*



3.2 Setting your preferences in SMap

SMap allows you to choose what units of measurement your routes are measured in, whether you want your routes to be uploaded live onto our website and how often your position is recorded on the route.

GPRS

If you would like to upload your routes live to the Sanoodi site or save them direct from your Windows Mobile to the Sanoodi web-site select GPRS..

UNITS

If you want to change how SMap records and displays your routes, in kilometres or miles. Select Settings from the login menu and select your preferred measurement.

S *You may have to configure your Windows Mobile's GPRS settings in order to use Smap's live facility. Please see Appendix for more information on how to set this up. Remember your service provider will charge you for any data that is sent or received by your Windows Mobile when this is activated.*

GPS INTERVAL

Setting GPS interval allows you to define how often SMap takes and stores your GPS position. This depends on the activity that you are recording. The two key factors are the speed and the length of time that your activity/route will take.

SMap defaults to every five seconds and this suits the majority of activities. However, if you were sailing or kayaking where average speeds would be lower than some activities such as running or road cycling we would recommend that you change this setting to every 15 seconds.



fig iv: Changing your settings

If your activity or route is going to take several hours or even a couple of days! This also might be a good reason to increase the frequency as increasing this to every 15 seconds may help to sustain the battery life of your device. We would not recommend increasing above 30 seconds as this might affect the accuracy of the recording your route.



4 Using SMap

SMap uses your Windows Mobile Device's internal GPS to record your routes. SMap can also be used with external Bluetooth GPS receivers. This section covers how to record a route and how to repeat and manage routes that are already on your device.

4.1 Logging in

To login, select the SMap icon from your programs folder or start menu and enter your username and password and select login.

4.2 Recording your first route

Once that you have logged into SMap, select "Record your Route" to start recording.



fig.v: Recording or redo a route options



fig.vi: Naming route and selecting activity



fig. vii: Recording a route screen

Enter a name for this route i.e. Morning run or walk in the Park and select which activity you are recording i.e. running or cycling and then wait till SMap has fixed its location. The GPS icon at the bottom of your screen will change once that your GPS has fixed its location.

The Satellite image at the bottom right corner indicates the status of your Windows Mobile GPS. You will not be able to start recording a route until this shows that the GPS has fixed its location. This normally takes between 15 & 30 seconds.



Start/Resume Once that the GPS has fixed your location you can select Start. (If the Start button is not available This is because the GPS has not yet fixed its location.



Pause - select this for any break's in your route, or for any periods of time that you do not want the route to be recorded.



Stop - Select this at the end of your route. A summary will be shown and if GPRS is set up and available your route will be uploaded automatically to the Sanoodi website.





S If your Windows Mobile device does not have a clear view of the sky i.e. you are in a building, a car or under the cover of trees. Or if you are already moving when you start SMap and login, it might be difficult for your GPS to fix its location. Move into a location where you have a clear view of the sky and wait until the GPS icon indicates that the Phone's GPS has fixed its location.

4.3. Redo an existing route

Selecting Redo Route shows you all routes which have been recorded on the device against your account. Select the route that you would like to redo using the repeat route from the options menu and then record the new version of this route as in 4.2.

4.4 Deleting your routes

Selecting show your routes from the options menu allows you to delete a route too. Please remember that if this route has not already been uploaded to the Sanoodi site this action will permanently remove the route. The  icon to the left of the route indicates that the route has not been uploaded.

The  icon indicates that the route has been uploaded to the Sanoodi site.

4.5 Uploading your routes.

Routes can be transferred from your Windows Mobile device in one of two ways:

1) Direct from your device to the Sanoodi website via GPRS.

To do this please ensure that you have switched GPRS to on in the settings menu (see section 3.2) and that your phone is able to connect to the Internet. You can easily check this by opening your device's Internet Browser and going to your normal home page. If you are not able to see your home page in the Browser, please read through the FAQ's to ensure that your device is set up correctly. If there is no available signal i.e. you are not able to make a phone call on the device then GPRS is not available at that location.

2) Connected to your PC via USB or Cradle.

Once that you have connected your device to your PC and assuming that your PC is connected to the Internet your routes should be uploaded as soon as you start the Sanoodi application.

Please Note - If you have not setup an account on Sanoodi with the same username and password as SMap it will not be possible to upload your routes.

4.6 Editing your routes

If you would like to edit your route, this must be done on the Sanoodi website. Ensure that your route has been uploaded and then if you are logged in select the Red edit button.



*fig. viii: Options:
Repeat or Delete a route*



5 FAQ's

Here are the answers to the questions that keep getting asked by our users. If you cannot find an answer to your question please send it onto us at smap@sanoodi.com .

5.1 What does verification mean?

This is required if you want to upload your route to the Sanoodi website. In order to ensure that your routes are uploaded against your account SMap needs to verify that your username on SMap matches your username and password on Sanoodi.

5.2 Will SMap cost me anything?

No, but there will be charges raised by your service provider when communications occur between SMap and the Sanoodi website. This will only happen when you have enabled GPRS in your settings and are uploading routes live to the server. If you are uploading routes via USB and your desktop connection to the internet you will not be charged. by your mobile phone service provider. Sanoodi do not charge for SMap.

5.3 Why can't i see my route against a map?

Once that you have uploaded your route into Sanoodi you will be able to view your route against maps on the website. Sanoodi intend that maps will become available to SMap users shortly but will be dependent on SMap having GPRS activated.

5.4 What is GPRS?

GPRS is an acronym for General Packet Radio Service. GPRS is a wireless technology used by GSM (Global System for Mobile) networks which enables Internet and other data communication between your Phone and other remote applications such as e-mail, servers or web-sites. Because it is a packet-based service, you can stay connected for an unlimited amount of time as only downloaded data is monitored with this service. Charges for GPRS will depend on your service provider, your contract and your location. If you are not in your country of residence "roaming" data charges can be considerably more expensive than GPRS can normally be relied upon to deliver between 6 and 32Kb/second. Please check rates with your service provider before enabling GPRS.

5.5 How big is a typical SMap route file?

A typical Sanoodi route file would be no more than 100Kb in size, this does depend on the length of route.

5.6 Can i add and Geotag photos that I have taken on my phone's camera to my route?

Sorry, not in Version 1.2, but this feature will be made available in version 1.3.

5.7 How can I use SMAP if my phone does not have an internal GPS receiver?

You will need to use a Bluetooth enabled GPS receiver in order to run SMap

5.8 How do i use SMap with my bluetooth enabled GPS receiver?

Basically you need to ensure that bluetooth is enabled on your phone and that the phone and GPS receiver are paired and working. Please check documentation that came with your Phone and GPS on how to do this. (continued on next page).



FAQ's *continued*

5.8 How do i use SMap with my bluetooth enabled GPS receiver? (Continued)

IMPORTANT: For support on Smartphones (i.e. Windows Mobile 5 for Smartphone, or Windows Mobile 6 Standard), there will probably also be the need for installing some 'GPS Settings' software for configuring the COM port that your GPS is installed on. Try this link at MSDN for further information.

<http://blogs.msdn.com/windowsmobile/archive/2006/06/07/620387.aspx>

Additional help for configuring external Bluetooth GPS receivers:

<http://msdn2.microsoft.com/en-us/library/bb158600.aspx>

Once that you have done this and your external GPS is paired with your device, start SMap and login.

5.9. What happens if my phone's battery runs out while i am recording a route?

Your route will be stored. Obviously, once that your phone's battery has run out SMap cannot continue to record your route! But, please be reassured that we are working on this one.....



6. Appendix

If you are having problems installing SMap onto your Windows Mobile Device please check out this part of the appendix - If you have any other issues regarding installation onto your device please e-mail them to: smap@sanoodi.com. Sanoodi are not able to provide support to individuals, but if we are made aware of issues we will post fixes to common problems or issues on our website and in manuals as soon as we can. Your feedback is always appreciated.



GPRS settings by Country - USA & Canada

United States

Service Provider	APN	Username	Password	Gateway / DNS
Cingular http://www.cingular.com/support	isp.cingular	ispda@cingulargprs.com	CINGULAR1	DNS: 66.209.10.201, 66.209.10.202
AT & T	proxy for VPN public	(leave blank)	(leave blank)	Gateway IP: 10.250.250.250 or blank. Port: 9201 or blank
Verizon http://support.vzw.com/ https://mobileweb.vzw.com/	(leave blank)	(leave blank)	(leave blank)	Gateway IP: 153.114.115.100 Port: 9203 or Gateway IP: 12.168.70.74 Port: 9201 or Gateway IP: 153.114.115.100 Port 9203
T-Mobile https://support.t-mobile.com/	internet2.voicestream.com for VPN: internet3.voicestream.com	(leave blank)	(leave blank)	West Primary DNS: 216.155.175.40 Secondary DNS: 216.155.175.41 East Primary DNS: 216.155.175.170 Secondary DNS: 216.155.175.171 Central Primary DNS: 216.155.175.105 Secondary DNS: 216.155.175.106
Cincinnati Bell http://www.cincinnatibell.com/customer_support/product_support/	web.gocbw.com for VPN: internet	(leave blank) (leave blank)	(leave blank) (leave blank)	

Canada

Service Provider	APN	Username	Password	Gateway / DNS
Fido (microcell)	internet.fido.ca	fido	fido	DNS: 204.92.15.11
Rogers AT&T(Internet)	internet.com	wapuser1	wap	
Rogers AT&T (VPN)	vpn.com	wapuser1	wap	



GPRS Settings - UK & Europe

United Kingdom

Service Provider	APN	Username	Password	Gateway / DNS
O2 (contract)	mobile.02.co.uk	web	password	DNS: 193.113.200.200, 193.113.200.201
O2 (prepaid)	payandgo.o2.co.uk	web	web	
Vodafone UK	Internet	web	web	
Vodafone (prepaid)	pp.vodafone.co.uk	web	web	
T-Mobile	general.t-mobile.uk	user	mms	
T-Mobile (one2one)	general.t-mobile.uk	Username	one2one	
Orange UK	orangeinternet	user	pass	DNS: 158.43.192.1, 158.143.128.1
Orange (prepaid)	payginternet	user	pass	
Tesco-Mobile	prepay.tesco-mobile.com	tescowap	password	193.11.200.195 Port no. 9201
Virgin Mobile	goto.virginmobile.uk	user	(leave blank)	193.30.166.3 Port no: 8080
BT Mobile	btmobile.bt.com	bt	bt	212.183.137.12 Port no: 8799or 9201
Three	three.co.uk	(leave blank)	(leave blank)	

Deutschland / Germany

Service Provider	APN	Username	Password	Gateway / DNS
D2 Vodafone	web.vodafone.de	(any)	(any)	DNS: 139.7.30.125 139.7.30.126
E-plus	internet.eplus.de	eplus	gprs	DNS 212.023.97.2 212.023.97.3
D1 T-Mobile	internet.t-d1.de	td1	gprs	DNS: 193.254.160.1
Quam	quam.de	quam	quam	
O2 (Viag Interkom)	internet	(leave blank)	(leave blank)	

Nederland / The Netherlands

Service Provider	APN	Username	Password	Gateway / DNS
Vodafone (Normal)	web.vodafone.nl	vodafone	vodafone	
Vodafone (Business)	office.vodafone.nl	vodafone	vodafone	
T-Mobile	internet	t-mobile	t-mobile	DNS:193.79.237.39, 193.79.242.39
KPN Mobile	internet	KPN	gprs	DNS: 62.133.126.28 62.133.126.29



GPRS Settings - Europe

Nederland / The Netherlands (*continued from previous page*)

Service Provider	APN	Username	Password	Gateway / DNS
O2	internet	(leave blank)	(leave blank)	
Telfort	internet	(leave blank)	(leave blank)	

France

Service Provider	APN	Username	Password	Gateway / DNS
Orange Pro	orange.fr	orange	orange	DNS:194.051.003.056, 194.051.003.076
Orange Perso	orange	orange	orange	DNS:194.051.003.056, 194.051.003.076
Orange MIB	orange-mib	mportail	mib	Proxy:172.16.2.8:8000
Orange Mobicarte	orange-acte	orange	orange	
Bouyges	ebouygtel.com	(leave blank)	(leave blank)	DNS:62.201.119.99
Bouyges (B2Bouygtel)	b2bouygtel.com	(leave blank)	(leave blank)	DNS:62.201.119.99
SFR	websfr	(leave blank)	(leave blank)	DNS:172.20.2.10, 194.6.128.4
TEN (unlimited)	ao.fr	orange	orange	
TEN (pay by MByte)	ofnew.fr	orange	orange	

Suomi / Finland

Service Provider	APN	Username	Password	Gateway / DNS
Sonera	internet	(leave blank)	(leave blank)	DNS: 192.89.123.230, 192.89.123.231
Dna	internet	(leave blank)	(leave blank)	DNS: 217.78.192.78, 217.78.192.22
Radiolinja	internet	(leave blank)	(leave blank)	DNS: 213.161.33.200, 193.185.210.10

Sverige / Sweden

Service Provider	APN	Username	Password	Gateway / DNS
Telia	online.telia.se	(leave blank)	(leave blank)	
Vodafone Europolitan	internet.vodafone.net	(leave blank)	(leave blank)	
Tele2	ispink.swip.net	gprs	internet	



GPRS Settings - Europe

Norge / Norway

Service Provider	APN	Username	Password	Gateway / DNS
Telenor Mobil	internet	(leave blank)	(leave blank)	
Netcom	internet.netcom.no	(leave blank)	(leave blank)	DNS: 212.45.118.43, 212.45.118

Schweiz / Switzerland

Service Provider	APN	Username	Password	Gateway / DNS
Orange	internet	(leave blank)	(leave blank)	DNS: 213.55.128.1, 213.55.128.2
Sunrise	internet	internet	internet	DNS: 212.35.35.35, 212.35.35.5
Swisscom	gprs.swisscomm.ch	(leave blank)	(leave blank)	DNS: 164.128.36.34, 164.128.76.39

España / Spain

Service Provider	APN	Username	Password	Gateway / DNS
Vodafone (Airtel)	airtelnet.es	vodafone	vodafone	DNS: 212.73.32.3, 212.73.32.67
Telefonica (Movistar)	movistar.es	movistar	movistar	DNS: 194.179.001.100, 194.179.001.101
Amena	internet	CLIENTE	AMENA	DNS: 213.143.33.8, 213.143.32.20

Portugal

Service Provider	APN	Username	Password	Gateway / DNS
Vodafone (Telcel)	internet.vodafone.pt	(leave blank)	(leave blank)	DNS: 212.18.160.133, 212.18.160.134
Optimus	internet	(leave blank)	(leave blank)	DNS: 194.79.69.129
TMN	internet	(leave blank)	(leave blank)	DNS: 194.65.3.20, 194.65.3.21

Türkiye / Turkey

Service Provider	APN	Username	Password	Gateway / DNS
Aria	aycell	(user specified)	(user specified)	DNS: 212.156.4.1, 212.156.4.4
AVEA	internet	(leave blank)	(leave blank)	
Telsim	telsim	(leave blank)	(leave blank)	
Turkcell	internet	(leave blank)	gprs	DNS: 212.252.168.240, 212.252.119.4



GPRS Settings - Europe

Eire / Ireland

Service Provider	APN	Username	Password	Gateway / DNS
Vodafone	isp.vodafone.ie	vodafone	vodafone	
02 (contract)	open.internet	gprs	gprs	DNS: 62.40.32.33, 62.40.32.34
02 (prepaid)	pp.internet	gprs	gprs	DNS: 62.40.32.33, 62.40.32.34
Meteor	isp.mymeteor.ie	my	isp	
Three	3ireland.ie	(leave blank)	(leave blank)	

Island / Iceland

Service Provider	APN	Username	Password	Gateway / DNS
Siminn	gprs.simi.is	(leave blank)	(leave blank)	

Belgium

Service Provider	APN	Username	Password	Gateway / DNS
Orange	orangeinternet	(leave blank)	(leave blank)	
Mobistar	web.pro.be	mobistar	>mobistar	DNS:212.65.63.10, 212.65.63.145
Proximus	internet.proximus.be			195.238.2.21, 195.238.2.22

Danmark / Denmark

Service Provider	APN	Username	Password	Gateway / DNS
TDCMobil	internet	(leave blank)	(leave blank)	193.162.146.9, 193.162.153.31
Orange DK	web.orange.dk	(leave blank)	(leave blank)	212.97.206.131, 212.97.206.161
Sonofon	(leave blank)	(leave blank)	(leave blank)	DNS: 212.97.206.131, 212.97.206.161

Italia / Italy

Service Provider	APN	Username	Password	Gateway / DNS
BLU Contratto	INTERNET	(leave blank)	(leave blank)	DNS: 212.17.192.49, 212.17.192.49
BLU Prepagata	PINTERNET	(leave blank)	(leave blank)	DNS: 212.17.192.49, 212.17.192.49
Vodafone OMNITEL	web.omnitel.it	(leave blank)	(leave blank)	DNS: 194.185.97.134
TIM	uni.tim.it ibox.tim.it	(leave blank)	(leave blank)	DNS:213.230.155.94, 213.230.130.222
Wind	internet.wind	(leave blank)	(leave blank)	DNS: 212.245.255.2



GPRS Settings - Europe

Česká republika / Czech Republic

Service Provider	APN	Username	Password	Gateway / DNS
CeskyMobil (contract)	internet	(leave blank)	(leave blank)	DNS: 212.67.64.2
CeskyMobil (prepaid)	cinternet	(leave blank)	(leave blank)	DNS: 212.67.64.2
Eurotel (contract)	internet	(leave blank)	(leave blank)	DNS: 160.218.10.200, 160.218.43.200
Eurotel Go	gointernet	(leave blank)	(leave blank)	DNS: 160.218.10.201, 194.228.2.1
Oscar (contract)	internet	(leave blank)	(leave blank)	DNS: 217.77.161.130 217.77.161.131
Oscar (Oskarta)	ointernet	(leave blank)	(leave blank)	as Oscar (contract)
T-Mobile	internet.t-mobile.cz	(leave blank)	(leave blank)	DNS: 62.141.0.1, 62.141.0.2

Österreich ./ Austria

Service Provider	APN	Username	Password	Gateway / DNS
Connect Austria ONE OneNet	web.one.at	(uaer specified)	(user specified)	DNS: 194.24.128.100, 194.24.128.102
Max Online	gprsinternet	GPRS	(leave blank)	DNS: 213.162.64.1, 213.162.64.2
Max Online Business	business.gprsinternet	GPRS	(leave blank)	As for Max online
Max Online Metro	gprsmetro	GPRS	(leave blank)	As for Max online
Mobikom A1	A1.net	gprs@a1plus.at	(leave blank)	DNS: 194.48.124.200, 194.48.139.254
tele.ring	web	web@teleting.at	web	DNS: 212.95.31.11, 212.95.31.35



GPRS Settings - Europe

Rossiyskaya Federatsiya / Russian Federation

Service Provider	APN	Username	Password	Gateway / DNS
Beeline	internet.beeline.ru	(leave blank)	(leave blank)	DNS: 194.190.195.66, 194.190.192.34
Megafon(NWGSM)	internet.nw	(leave blank)	(leave blank)	
MTS	internet.mts.ru	mts	mts	DNS: 213.87.0.1, 213.87.1.1
PRIMTEL	internet.primtel.ru	(leave blank)	(leave blank)	

Polska / Poland

Service Provider	APN	Username	Password	Gateway / DNS
Polkomtel	www.plugsm.pl	(leave blank)	(leave blank)	212.2.96.51, 212.2.96.52
Era	erainternet	erainternet	erainternet	213.158.194.1
Idea	www.idea.pl	idea	idea	194.9.223.79, 194.204.159.1

Slovenská republika / Slovakia

Service Provider	APN	Username	Password	Gateway / DNS
Eurotel	internet	(leave blank)	(leave blank)	
Orange	internet	jusernjm	pasvord	



GPRS Settings - Asia, Australasia & Middle East

Australia

Service Provider	APN	Username	Password	Gateway / DNS
Telstra (2G)	telstra.internet	(leave blank)	(leave blank)	139.130.4.4, 203.50.170.2
Telstra (3G Data Bundles)	telstra.datapack	(leave blank)	(leave blank)	as Telstra 2G
Telstra (3G pay by time)	telstra.pcpack	(leave blank)	(leave blank)	as Telstra 2G
Telstra (3G prepay)	telstra.wap	(leave blank)	(leave blank)	as Telstra 2G
Optus (2G)	internet	(leave blank)	(leave blank)	202.139.83.3, 192.65.91.129
Optus (3G)	connect	(leave blank) or guest	(leave blank) or guest	as Telstra 2G
Three	3netaccess	a	a	202.124.68.130, 202.124.76.6
Vodafone	vfinternet.au	(leave blank)	(leave blank)	192.189.54.33, 210.80.58.3
Virgin Mobile	VirginInternet	(leave blank) or guest	(leave blank) or guest	61.88.88.88

New Zealand

Service Provider	APN	Username	Password	Gateway / DNS
Vodafone NZ (restricted)	www.vodafone.net.nz	(leave blank)	(leave blank)	202.20.93.10 203.97.191.189
Vodafone Live	live.vodafone.com	(leave blank) or guest	(leave blank) or guest	as Vodafone NZ
Vodafone (unrestricted)	internet	(leave blank) or guest	(leave blank) or guest	as Vodafone NZ

/ Nihon / Japan

Service Provider	APN	Username	Password	Gateway / DNS
J-Phone (Vodafone)	phone	j@phone	jphone	

Thailand

Service Provider	APN	Username	Password	Gateway / DNS
AIS	internet	(leave blank)	(leave blank)	DNS: 202.183.255.20, 202.183.255.21
DTAC	www.dtac.co.th	(leave blank)	(leave blank)	DNS: 203.155.33.1, 203.44.144.33



GPRS Settings - Asia, Australasia & Middle East

India

Service Provider	APN	Username	Password	Gateway / DNS
Orange Hutch	www	(leave blank) or guest	(leave blank) or guest	10.11.206.51 10.11.206.50
Orange Hutch (Gujarat)	web	guest	guest	10.11.206.51 10.11.206.50
BPL Mobile	bplgprs.com	bplmobile		202.169.145.34, 202.169.129.40
Airtel	airtelgprs.com	(leave blank) or guest	(leave blank) or guest	202.56.240.5 202.56.230.5
Idea Cellular	internet	guest	guest	10.4.42.15
MTNL Delhi	gprsmtnldel	mtnl	mtnl123	
MTNL Mumbai (Contract)	gprsmntlmum	mtnl	mtnl123	
MTNL Mumbai (pre-pay)	gprspmsmum	mtnl	mtnl123	
Spice Telecom	simplydownload	guest	guest	
BSNL	celloneportal	guest	guest	192.168.051.163
BSNL (prepay)	www.e.pr	guest	guest	218.248.240.208 218.248.240.135

Indonesia

Service Provider	APN	Username	Password	Gateway / DNS
Excelcomindo	www.xlgprs.net	xlgprs	proxl	202.152.254.245 202.152.254.246
IM3	www.indosat-m3.net	gprs	im3	202.155.46.66 202.155.46.77
Indosat (Matrix)	satelinogprs.com indosatgrps	(leave blank) or guest	(leave blank) or guest	202.155.46.66 202.155.46.77
Telkomsel	internet telkomsel	wap	wap123	202.152.0.2 202.155.14.251 202.155.14.253

Israel

Service Provider	APN	Username	Password	Gateway / DNS
Cellcom	internetg	(leave blank)	(leave blank)	
Orange	Internet	(leave blank)	(leave blank)	
MTC-Vodafone	apn01	(leave blank)	(leave blank)	



GPRS Settings - Asia, Australasia & Middle East

China

Service Provider	APN	Username	Password	Gateway / DNS
China Mobile	cmnet	(leave blank)	(leave blank)	
China Unicom	(leave blank)	(leave blank) or guest	(leave blank (or guest)	10.0.2.100

Hong Kong

Service Provider	APN	Username	Password	Gateway / DNS
CSL	internet	(leave blank)	(leave blank)	202.84.255.1, 203.116.254.150
Orange	web.orangehk.com	(leave blank)	(leave blank)	
New World	internet	(leave blank)	(leave blank)	
People	internet	(leave blank)	(leave blank)	
SmarTone	internet	(leave blank)	(leave blank)	202.140.96.51, 202.140.96.52
Sunday	internet	(leave blank)	(leave blank)	

Pakistan

Service Provider	APN	Username	Password	Gateway / DNS
Ufone	ufone.internet	(leave blank)	(leave blank)	(leave blank)

Phillipines

Service Provider	APN	Username	Password	Gateway / DNS
Vglobe	www.globe.com.ph	globe	globe	203.127.225.10, 203.127.225.11
Smart	internet			202.57.96.3, 202.57.96.4
Sun Cellular	minternet	(leave blank)	(leave blank)	

Lebanon

Service Provider	APN	Username	Password	Gateway / DNS
Cellis FTML	internet.ftml.com.lb	plugged	plugged	
MTC Touch	gprs.mtctouch.com.lb	(leave blank) or guest	(leave blank) or guest	



GPRS Settings - Asia, Australasia & Middle East

Singapore

Service Provider	APN	Username	Password	Gateway / DNS
Singtel	internet	(leave blank)	(leave blank)	165.21.100.88, 165.21.83.88
Starhub	shwapint	(leave blank)	(leave blank)	203.116.1.78, 203.116.254.150
M1	mobilenet	(leave blank)	(leave blank)	202.79.64.21, 202.79.64.26

Saudi Arabia

Service Provider	APN	Username	Password	Gateway / DNS
Saudi Telecom	jawalnet.com.sa	(leave blank)	(leave blank)	

United Arab Emirates

Service Provider	APN	Username	Password	Gateway / DNS
Etisalat	etisalat.ae	etisalat.ae	etisalat.ae	

Malaysia

Service Provider	APN	Username	Password	Gateway / DNS
Celcom	celcom.net.my	(leave blank)	(leave blank)	
Maxis 2G (contract)	internet.gprs.maxis	(leave blank) or guest	(leave blank) or guest	202.75.129.101 10.216.4.21
Maxis 3G (contract)	unet	maxis	wap	10.213.17.1 10.213.17.2
DiGi	diginet	(leave blank) or guest	(leave blank) or guest	203.92.128.131 203.92.128.132



GPRS Settings - Americas and Africa

Mexico

Service Provider	APN	Username	Password	Gateway / DNS
Movistar	internet.movistar.mx	(leave blank)	(leave blank)	
Telcel	internet.iteicel.com	webgprs	webgprs2002	

Argentina

Service Provider	APN	Username	Password	Gateway / DNS
CTI	internet.ctimovil.com.ar	ctigprs	(leave blank)	170.51.255.100 170.51.242.18
Movistar (Unifon)	internet.gprs.unifon.com.ar internet.unifon	wap	wap	
Personal	gprs.personal.com	(leave blank)	(leave blank)	

Brasil

Service Provider	APN	Username	Password	Gateway / DNS
Claro	claro.com.br	claro	claro	200.169.126.15 10.121.5.60
Oi	gprs.oi.com.br	(leave blank) or oiwap	(leave blank) or oioioi	
TIM	tim.br	tim	tim	10.223.246.102 10.223.246.103
Velox	wap.telcel.com	iesgprs	iesgprs2002	66.36.250.14

Chile

Service Provider	APN	Username	Password	Gateway / DNS
Claro	wap.clarochile.cl	clarochile	clarochile	
Entel PCS	imovil.entelpcs.cl	entelpcs	entelpcs	164.77.252.197 164.77.252.198
Telefonica Movil	web.movil.cl	web	web	200.68.32.180 200.30.193.15
Movistar	wap.tmovil.cl	wap	wap	

Peru

Service Provider	APN	Username	Password	Gateway / DNS
Claro (TIM)	tim.pe	tim	tulibertad	



Uruguay

Service Provider	APN	Username	Password	Gateway / DNS
ANCEL	gprs.ancel	(leave blank) or guest	(leave blank) or guest	200.40.30.245 200.40.220.245
CTI	internet.ctimovil.com.uy	ctiweb	ctiweb999	
Movistar	webapn.movistar.com.uy	movistar	movistar	

Egypt

Service Provider	APN	Username	Password	Gateway / DNS
Click Vodafone	internet.vodafone.net	internet	internet	
Etisalat	etisalat	(leave blank) or guest	(leave blank) or guest	
MobiNil	mobinilweb	(leave blank) or guest	(leave blank) or guest	80.75.166.250 163.121.163.201

South Africa

Service Provider	APN	Username	Password	Gateway / DNS
Cell-C	internet	(leave blank) or guest	(leave blank) or guest	196.7.0.138 196.7.142.132
MTN	internet	(leave blank) or guest	(leave blank) or guest	196.11.240.241
Vodacom	internet	(leave blank) or guest	(leave blank) or guest	196.207.40.165 196.43.46.190
Vodacom (VPN)	internetvpn	(leave blank) or guest	(leave blank) or guest	196.207.40.165 196.43.46.190
Virgin Mobile	vdata	(leave blank) or guest	(leave blank) or guest	196.7.0.138 196.7.142.132

Kenya

Service Provider	APN	Username	Password	Gateway / DNS
Celtel	ke.celtel.com	(leave blank) or guest	(leave blank) or guest	
Safaricom	web.safaricom.com	web	web	

Maroc / Morocco

Service Provider	APN	Username	Password	Gateway / DNS
Maroc Telecom	iam	wac	1987	
Medi Telecom	wap.meditel.ma	MEDIWAP	MEDIWAP	150.150.10.20



SMAP license v.1.2

SMap End-User Licence Agreement

IMPORTANT - READ CAREFULLY THE FOLLOWING TERMS AND CONDITIONS (THESE "TERMS") BEFORE INSTALLING, DOWNLOADING OR USING THE SANOODI SOFTWARE FROM THE www.sanoodi.com WEBSITE (THE "SITE"). THESE TERMS ARE AVAILABLE AT www.sanoodi.com/terms/smap . YOU ALSO AGREE TO BE BOUND BY SANOODI'S WEBSITE TERMS AND CONDITIONS OF USE, AVAILABLE AT www.sanoodi.com/terms/user AND SANOODI'S PRIVACY POLICY AVAILABLE AT www.sanoodi.com/terms/privacy COLLECTIVELY THE TERMS

THESE TERMS CONSTITUTE THE COMPLETE AND EXCLUSIVE STATEMENT OF THE AGREEMENT BETWEEN YOU, OR THE COMPANY ON WHOSE BEHALF YOU ARE INSTALLING THE SOFTWARE, ("YOU" AND "YOUR") AND SANOODI LTD. ("SANOODI"), WHICH SUPERSEDES ANY PROPOSAL OR PRIOR AGREEMENT, ORAL OR WRITTEN, AND ANY OTHER COMMUNICATION RELATING TO THE SUBJECT MATTER OF THESE TERMS. THESE TERMS APPLY TO THE SOFTWARE, SANOODI'S SERVICES, AND ANY MOBILE APPLICATIONS, SYSTEMS, SERVERS, DEVICES OR OTHER ITEMS RELATED TO SANOODI SERVICES (COLLECTIVELY, THE "SOFTWARE").

IMPORTANT: In order to use the Software, You must have data connectivity services from your service provider, which may be your mobile carrier, WiFi service provider or other provider. The cost of this data connectivity service may vary among service providers and the User understands that it is the User's responsibility to check such costs. In particular, the User further understands that the costs of such data connectivity service may rise significantly when roaming internationally. Therefore, the User is advised to consider the cost of using the Sanoodi Software, depending on the User's location at any particular time. The User may wish to consider disabling the "AutoStart" feature, depending on the User's location.

EMERGENCY SERVICES

Sanoodi does not provide Emergency Services in conjunction with the Software. "Emergency Services" means services that connect a user to emergency services personnel or public safety answering points pursuant to applicable local and or national regulatory requirements. It is up to the User to ensure that they are able to contact Emergency Services on their mobile device or PDA, whilst using the Software.

This Mobile Device End User Licence Agreement (the "Agreement") is between You (either an individual or an entity), the End User, and Sanoodi. The Agreement authorises you to use the Software specified in Clause 1 below, which may be stored on a CD-ROM, sent to You by electronic mail, downloaded from Sanoodi's Web pages or Servers or from other sources under the terms and conditions set forth below, or downloaded directly to your mobile device, or PDA. This is an agreement on end user rights and not an agreement for sale. Sanoodi continues to own the copy of the Software and the physical media contained within any download, and any other copy that You are authorised to make pursuant to this Agreement.



Please read this Agreement carefully before installing, downloading or using the Software. By clicking on the "I Accept" button while installing, downloading and/or using the Software, You agree to the terms and conditions of this Agreement. If You do not agree to all of the terms and conditions of this Agreement, promptly click on the "Decline" or "I Do Not Accept" button, cancel the installation or downloading, or destroy or return the Software and accompanying documentation to Sanoodi. YOU AGREE THAT YOUR USE OF THE SOFTWARE ACKNOWLEDGES THAT YOU HAVE READ THIS AGREEMENT, UNDERSTAND IT, AND AGREE TO BE BOUND BY ITS TERMS AND CONDITIONS.

IMPORTANT NOTICE

The Software, as with most Internet applications, is vulnerable to various security issues and hence should be considered unsecured. By using the Software and the Internet in general, you may be subject to various risks, including among others:

Exposure to objectionable material and/or parties, including without limitation, contaminated files.

Unauthorized invasion of your privacy during, or as a result of, your use or another's use of the system.

Spooing, eavesdropping, sniffing, spamming, breaking passwords, harassment, fraud, forgery, "imposturing", electronic trespassing, tampering, hacking, nuking, system contamination including without limitation use of viruses, worms and Trojan horses causing unauthorised, damaging or harmful access and/or retrieval of information and data on your computer and other forms of activity that may even be considered unlawful.

Unauthorized exposure of information and material you listed or sent, on or through the Sanoodisystem to other users, the general public or any other specific entities for which the information and material was not intended by you.

1. Software

As used in this Agreement, the term "Software" means, collectively: (i) the software product identified above (ii) all the contents of any disk(s), CD-ROM(s), electronic mail and its file attachments, or other media with which this Agreement is provided, including the object code form of the software delivered via a CD-ROM, electronic mail or Web page download (iii) digital images, stock photographs, clip art, or other artistic work ("Stock Files") (iv) related explanatory written materials and any other possible documentation related thereto ("Documentation"); (v) fonts (vi) upgrades, modified versions, updates, additions (collectively "Updates"), if any, licenced to You by Sanoodi under this Agreement.

2. End User Rights and Use – Grant of Licence

Sanoodi grants to You a non-exclusive, non-transferable end user right to install the Software on the local hard disk(s) or other permanent storage media of one computer, or mobile device or PDA and use the Software on a single computer, terminal, mobile device or PDA at a time.



You acknowledge and understand that the Service is not a traditional telephone service or a replacement for Your primary telephone service. Important distinctions (some, but not necessarily all, of which are described in this Terms) exist between the traditional telephone service and the Service provided by Sanoodi

Sanoodi is entitled, without any liability, to refuse, restrict, limit, suspend and/or interfere or interrupt the Service or any part thereof, without any notice to You for the repair, improvement, and/or upgrade of the Service or for any of the reasons for termination as mentioned below.

Sanoodi may change the technical features of the Service in order to keep pace with the latest demands and technological developments, at its own discretion and without any notice to You.

3. Limitations on End User Rights

You may not copy, distribute, or make derivative works of the Software except as follows:

- 3.1. You may make one copy of the Software on magnetic media as an archival backup copy, provided Your archival backup copy is not installed or used on any computer. Any other copies You make of the Software are in violation of this Agreement.
- 3.2. You may not use, modify, translate, reproduce or transfer the right to use the Software or copy the Software except as expressly provided in this Agreement.
- 3.3. You may not resell, sub-licence, rent, lease or lend the Software.
- 3.4. You may not reverse engineer, reverse compile, disassemble or otherwise attempt to discover the source code of the Software (except to the extent that this restriction is expressly prohibited by law) or create derivative works based on the Software.
- 3.5. You agree that You shall only use the Software in a manner that complies with all applicable laws in the jurisdiction in which You use the Software, including, but not limited to, applicable restrictions concerning copyright and other intellectual property rights.

4. Copyright

The Software and all rights, without limitation including proprietary rights therein, are owned by Sanoodi and/or its licensors and affiliates and are protected by international treaty provisions and all other applicable national laws of the country in which it is being used. The structure, organisation and code of the Software are the valuable trade secrets and confidential information of Sanoodi and/or its licensors and affiliates. You must not copy the Software, except as set forth in clause 3 (Limitations On End User Rights). Any copies which You are permitted to make pursuant to this Agreement must contain the same copyright and other proprietary notices that appear on the Software.



5. Commencement and Termination

This Agreement is effective from the first date You install the Software. You may terminate this Agreement at any time by permanently deleting, destroying and returning, at your own costs, the Software, all back up copies and any related materials provided by Sanoodi. Your end user rights automatically and immediately terminate without notice from Sanoodia if You fail to comply with any provision of this Agreement, or any of the Terms. In such event, You must immediately delete, destroy or return at Your own cost, the Software, all backup copies and all related material to Sanoodi.

6. YOU ACKNOWLEDGE THAT THE SOFTWARE IS PROVIDED "AS IS" WITHOUT WARRANTY OF ANY KIND, EXPRESS OR IMPLIED, AND TO THE MAXIMUM EXTENT PERMITTED BY APPLICABLE LAW NEITHER SANOODI, ITS LICENSORS OR AFFILIATES NOR THE COPYRIGHT HOLDERS MAKE ANY REPRESENTATIONS OR WARRANTIES, EXPRESS OR IMPLIED, INCLUDING BUT NOT LIMITED TO THE WARRANTIES OF MERCHANTABILITY OR FITNESS FOR A PARTICULAR PURPOSE OR THAT THE SOFTWARE WILL NOT INFRINGE ANY THIRD PARTY PATENTS, COPYRIGHTS, TRADEMARKS OR OTHER RIGHTS. THERE IS NO WARRANTY BY SANOODI OR BY ANY OTHER PARTY THAT THE FUNCTIONS CONTAINED IN THE SOFTWARE WILL MEET YOUR REQUIREMENTS OR THAT THE OPERATION OF THE SOFTWARE WILL BE UNINTERRUPTED OR ERROR-FREE. YOU ASSUME ALL RESPONSIBILITY AND RISK FOR THE SELECTION OF THE SOFTWARE TO ACHIEVE YOUR INTENDED RESULTS AND FOR THE INSTALLATION, USE AND RESULTS OBTAINED FROM IT.

7. Limitation on Liability

UNDER NO CIRCUMSTANCES WILL SANOODI OR ITS DIRECTORS, EMPLOYEES OR AGENTS BE LIABLE TO YOU OR ANY THIRD PERSON FOR ANY INDIRECT, CONSEQUENTIAL, EXEMPLARY, INCIDENTAL, SPECIAL OR PUNITIVE DAMAGES, INCLUDING FOR ANY LOST PROFITS OR LOST DATA ARISING FROM YOUR USE OF THE SITE OR THE SERVICE, ANY PLATFORM APPLICATIONS OR ANY OF THE SITE CONTENT OR OTHER MATERIALS ON, ACCESSED THROUGH OR DOWNLOADED FROM THE SITE, EVEN IF SANOODI IS AWARE OR HAS BEEN ADVISED OF THE POSSIBILITY OF SUCH DAMAGES. NOTWITHSTANDING ANYTHING TO THE CONTRARY CONTAINED HEREIN, SANOODI'S LIABILITY TO YOU FOR ANY CAUSE WHATSOEVER, AND REGARDLESS OF THE FORM OF THE ACTION, WILL AT ALL TIMES BE LIMITED TO THE AMOUNT PAID, IF ANY, BY YOU TO SANOODI FOR THE SERVICE DURING THE TERM OF MEMBERSHIP, BUT IN NO CASE WILL SANOODI'S LIABILITY TO YOU EXCEED £50. YOU ACKNOWLEDGE THAT IF NO FEES ARE PAID TO SANOODI FOR THE SERVICE, YOU SHALL BE LIMITED TO INJUNCTIVE RELIEF ONLY, UNLESS OTHERWISE PERMITTED BY LAW, AND SHALL NOT BE ENTITLED TO DAMAGES OF ANY KIND FROM SANOODI, REGARDLESS OF THE CAUSE OF ACTION.

Nothing contained in this Agreement shall prejudice the statutory rights of any party dealing as a consumer. Nothing contained in this Agreement limits Sanoodi's liability to You in the event of death or personal injury resulting from Sanoodi's negligence. Sanoodi is acting on behalf of its employees and licensors or affiliates for the purpose of disclaiming, excluding and/or restricting obligations, warranties and liability as provided in this clause 7, but in no other respects and for no other purpose.



8. Technical Support

Sanoodi has no obligation to furnish You with technical support unless separately agreed in writing between You and Sanoodi.

9. File Transfer Service

By using the Software You may be able to send files (including but not limited to text, documents, products, software, scripts, graphics, photos, sounds) ("Files") from Your mobile phone and/or Your PC to other mobile phone and/or PC ("Receiver"). You understand that Sanoodi is not the owner of these Files and does not guarantee any confidentiality with respect to the Files that You send. You shall be solely responsible for the Files that You send and the consequences of sending them including but not limited to the consequences of sending them to Receiver.

By sending the Files You represent and warrant that You own or have the necessary rights and permissions to use all intellectual property rights in and to any Files, including rights to distribute and disseminate such Files and (ii) Your Files do not contain confidential or proprietary information.

As a Receiver You understand that You may receive Files from a variety of sources, and that Sanoodi is not responsible for the accuracy, usefulness, safety, or intellectual property rights of or relating to such Files. You may be exposed to Files that are inaccurate, offensive, indecent, or objectionable, and You agree to waive, and hereby do waive, any legal or equitable rights or remedies You may have against Sanoodi with respect thereto.

10. Governing Law and Jurisdiction

This Agreement shall be governed by and construed in accordance with English law. Disputes arising in connection with this legal notice shall be subject to the exclusive jurisdiction of the English courts.